

# Slide-out for Caravans & Campers



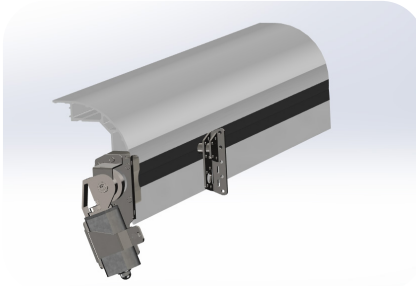
The InnoSlide is designed to create more living space in a caravan or camper. The system is watertight, has a stylish design with radius corners, closes flush against the wall and is lightweight.

The system is self-supporting and does not require reinforcement of the vehicle chassis or extra connection to the chassis for installing. The Slide-out is operated by 4 computer controlled motors, the computer constantly checks if the motors are in line and corrects or stops the motors if they are obstructed.

## Included parts

The set contains the following parts:

- 4 Assembled corners with motor and drive system.
- 1 Outer frame existing of 4 corner pieces(450x450mm) and 4 straight pieces cut to size.
- 1 V-seal that works as a wiper and keeps the water out of your vehicle.
- 1 Controller that keeps the corners synchronized.
- 1 Remote to control the slide.
- 1 Set of wall clips to fix the frame to your vehicle.
- 3-5 Frame rollers, these rollers prevent the bottom of the slide-out from bending (optional).
- 1 Emergency key so you can still retract the slide if one of the motors fails.



## Specifications:

Max Size (wxh): 4000x2000mm  
Max Weight: 500kg  
Max Travel: 935mm

Standard sizes:

| No. | Travel Length | Corner Length | Total Length | Weight |
|-----|---------------|---------------|--------------|--------|
| 1   | 435mm         | 500mm         | 570mm        | 15,9kg |
| 2   | 700mm         | 765mm         | 835mm        | 21,1kg |
| 3   | 935mm         | 1000mm        | 1070mm       | 26,2kg |

The system can be tailored on request.